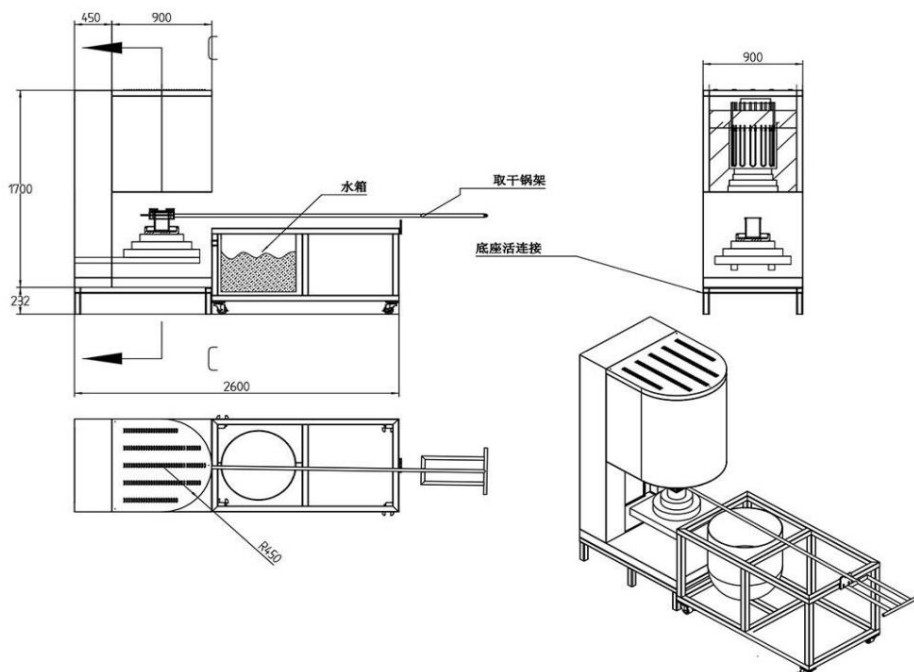


1700 °C Small Lifting Electric Furnace with Operating Platform





Technical Specifications:

Spent project	1700ÿ
Voltage AC	380V
Furnace chamber dimensions (mm).	350mm diameter * 350mm height
temperature control	±1ÿ
accuracy, uniformity of temperature field inside	±1ÿ (depending on the size of the heating chamber)
the furnace, temperature measuring element and measuring range.	Platinum-rhodium-platinum (PrB) thermocouple,
heating rate	temperature range 0-1820ÿ, adjustable heating rate, adjustable range: fastest heating rate 15 degrees per minute (15 degrees/min), slowest heating rate 1 degree per hour (1 degree/h).
Heating element	U-shaped 1800 silicon molybdenum rod
installation location and method	Vertically installed around the furnace
Furnace body	The furnace body is machined using CNC machine tools and undergoes polishing, grinding, pickling, phosphating, powder coating, and high-temperature baking. It features a two-tone design, a novel and attractive appearance, and boasts advantages such as oxidation resistance, acid and alkali resistance, corrosion resistance, high-
Furnace body structure	temperature resistance, and easy cleaning. The furnace body employs a double-layer air-cooled structure. Effective air-cooling guide baffles ensure overall cold air circulation within the furnace shell, ultimately cooling the conductive sheets of the heating elements before they are discharged from the furnace body, preventing high-
Furnace shell temperature	temperature oxidation of the conductive sheets. This guarantees a good
thermal insulation materials	working environment for long-term uninterrupted operation. The outer shell temperature is below 45 degrees Celsius, and four layers of insulation are used: alumina fiber cotton, alumina fiber board, alumina polycrystalline fiber board, and vacuum-formed high-purity alumina fiber
Protect	lightweight board material. The energy-saving effect is over 80% of that of older electric furnaces. Employing an integrated modular control unit, this system offers accurate control and features dual-loop control and protection, including protection against overshoot, overshoot, undershoot, phase loss,
control	overvoltage, overcurrent, overtemperature, current feedback, and soft start. It utilizes closed-loop technology with thyristor module trigger control, employing phase-shift trigger control or zero-crossing triggering. The output voltage, current, or power is continuously adjustable, exhibiting constant voltage, constant current, or constant power characteristics. The current loop is the inner loop, and the voltage loop is the outer loop. When a sudden load is applied or the load current exceeds the current limit, the voltage regulator's output current is limited to the rated current range, ensuring normal operation of the output and the regulator. Simultaneously, the voltage loop also participates in regulation, limiting the regulator's output current to the rated current range and maintaining constant output current and voltage with sufficient adjustment margin. This protects heating elements from excessive current and voltage.



	Impact, to achieve safe and reliable control effect and control accuracy.
Display parameters	Temperature, temperature range number, time period, remaining time, output power percentage, voltage, electrical Flow, etc.
Button	The buttons have a lifespan exceeding 100,000 cycles and include LED indicators. The temperature profile can be
temperature profile setting	set via a touchscreen.
Furnace opening and charging platform refractory material matching	The furnace opening and the charging platform are fitted with a stepped, cross-sealed refractory material, with angles on both the top and bottom of the refractory. The opening angle of the material platform increases, while the closing angle of the loading platform gradually decreases.
Loading	Alumina ceramic fiber material is used for loading and unloading, with the material rising and falling.
platform, lifting speed, loading	5-30s
load, lifting and	50kg
cooling	electromechanical
structure, warranty	Double-layer furnace shell, air-cooled
coverage and period.	The electric furnace comes with a one-year free warranty, but the heating element is not covered by the warranty.
Random spare parts	Two heating elements, two sets of rods, one instruction manual, one certificate of conformity, and one crucible tong. Pair of high-temperature gloves
Shipping Information	<ol style="list-style-type: none"> The electric furnace is packaged in two layers: wrapped in foam paper and then in plastic film. Wrap it around, then secure it with a metal frame base. Free domestic door-to-door delivery (free delivery within city limits) We will be responsible for any damage that occurs during the transportation of the electric furnace. Logistics methods: automobile, railway, ship (for foreign trade export), air freight (for domestic trade export). For export (trade) transportation, our company will arrange dedicated vehicles for nearby locations.

Thank you for contacting us!

Thank you to get in touch with us!

Company Name: Luoyang Juxing Kiln Co., Ltd.

Company Name: Luoyang Ju Xing Kiln Co., Ltd.

Main website: www.gwdl.com Email: thermo@gwdl.com Contact: 13271526781 0379-69936789

Address: No. 1, Xingye 1st Road, Science and Technology Industrial Park, Jianxi District, Luoyang City, Henan Province

Main station: www.gwdl.com Email: thermo@gwdl.com Contact information: 13271526781 0379-69936789

Add: No. 1, Xingye 1st Road, Science and Technology Industrial Park, Jianxi District, Luoyang City, Henan Province



高新技术企业/专精特新企业
专业的高温加热制造工厂 (-60°C~2600°C)

中国热处理行业协会理事单位
ISO45001:职业健康安全管理体系认证
ISO14001:环境管理体系认证
ISO9001:质量管理体系认证
欧盟CE产品认证



电话/邮箱
13271526781
+86 379-69936789
thermo@gwdl.com

Company Address: No. 1, Xingye Road, Jianxi Science
and Technology Industrial Park, Luoyang City

Contact information: 13271526781, 0379-69936789, thermo@gwdl.com

Website: www.gwdl.com www.gwdlcom.cn www.gwdl.org www.gwdl.cn